

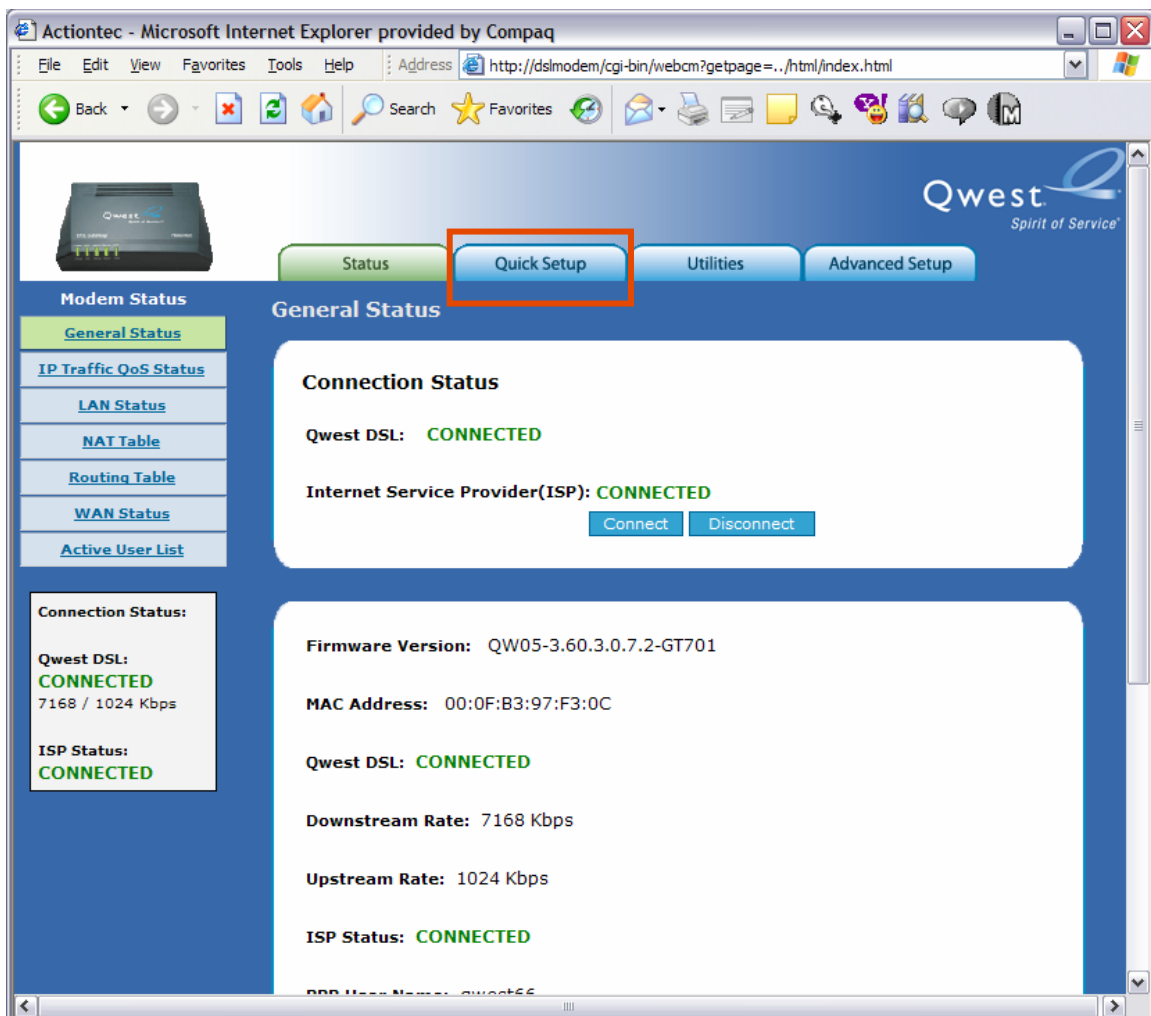
Qwest® Standard Modem: Actiontec® GT701

How to Configure RFC 1483 Using Static IP Mode

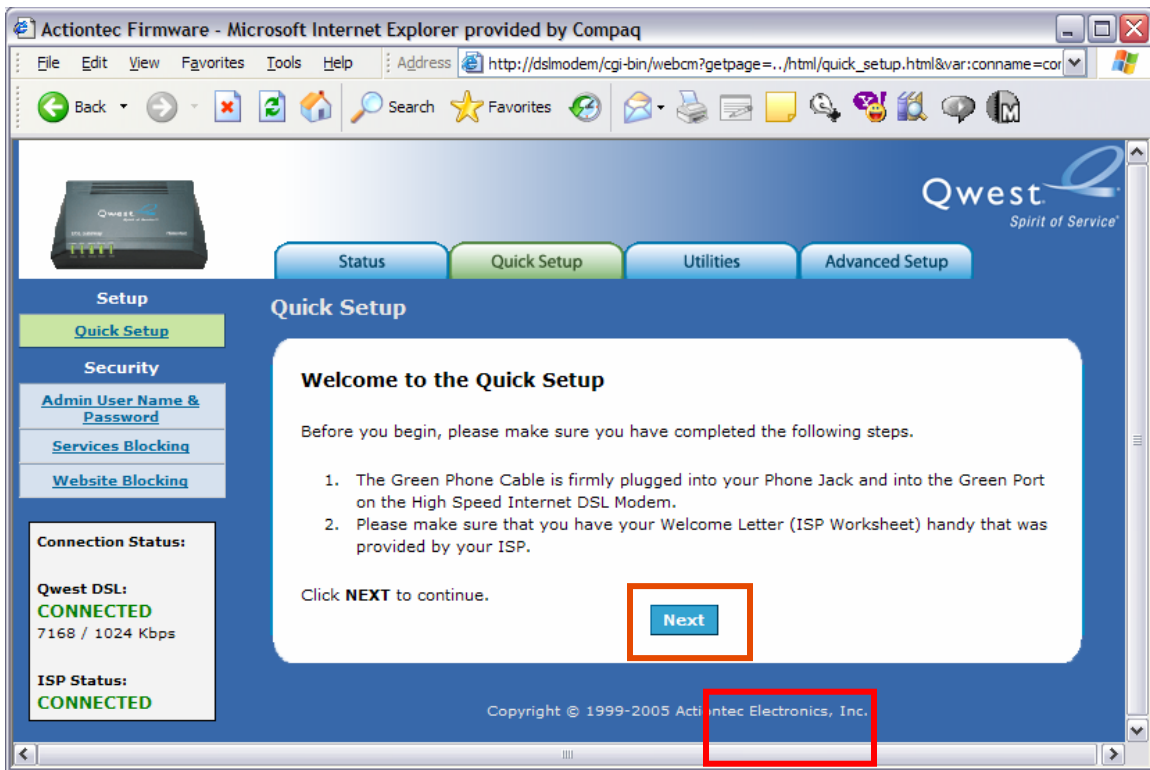
To configure the Qwest® Standard Modem: Actiontec® GT701 in RFC 1483 via Static IP mode:

- Your selected Internet Service Provider (ISP) must support bridging with static IP addressing.
- Your Qwest Standard Modem: Actiontec GT701 will terminate the bridging session allowing all routing features to be used on the LAN.

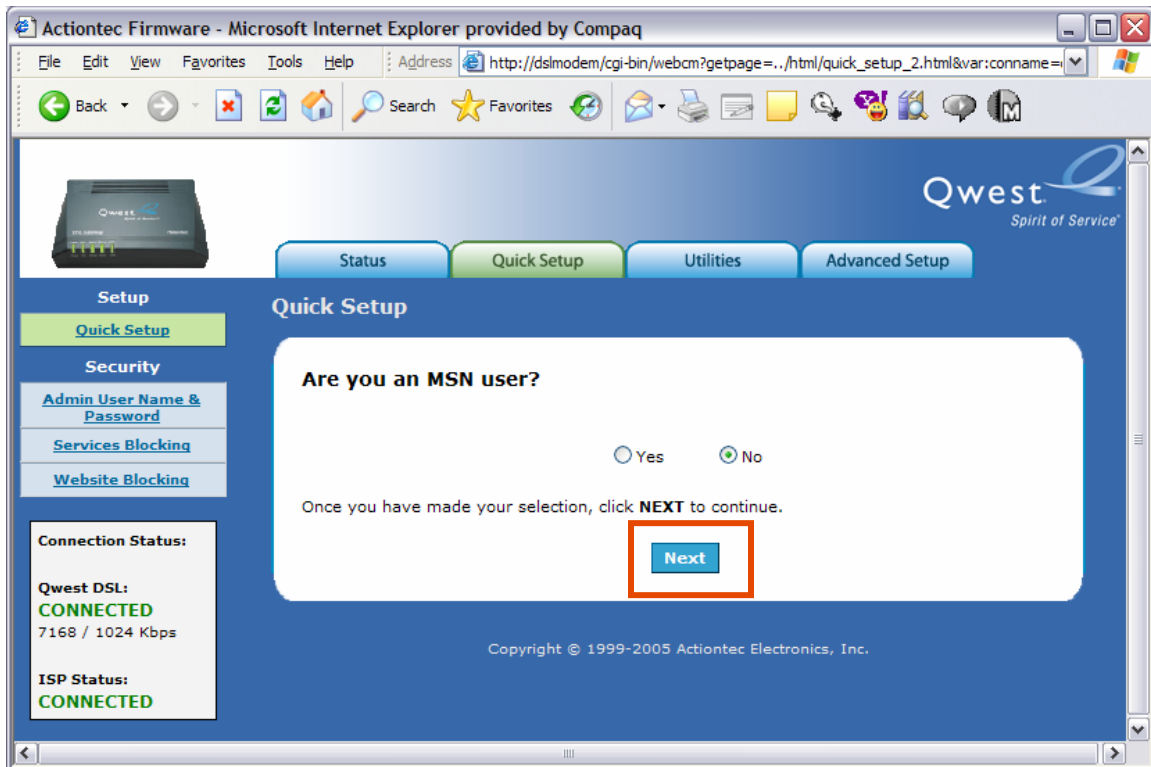
1. Enter "192.168.0.1" in the Address bar of your Internet browser, which automatically opens the "General Status" page. Select the **Quick Setup** tab.



2. Select the **Next** button.



3. Select the **No** radio button. Then, select **Next**.



4. Select the **RFC 1483 via Static IP** radio button.

Actiontec - Microsoft Internet Explorer provided by Compaq

Address: http://192.168.0.1/cgi-bin/webcm?getpage=../html/quick_setup_4.html&var:connam

Qwest Spirit of Service®

Status Quick Setup Utilities Advanced Setup

Setup

- Quick Setup
- Security
 - Admin User Name & Password
 - Services Blocking
 - Website Blocking

Connection Status:

Qwest DSL:
CONNECTED
7168 / 1024 Kbps

ISP Status:
NOT CONNECTED

Quick Setup

Please follow the steps below.

1. Select the item below that is utilized by your ISP.
 - PPPoA
 - PPPoE
 - RFC 1483 Transparent Bridging
 - RFC 1483 via DHCP
 - RFC 1483 via Static IP

Encapsulation RFC 1483 Bridged RFC 1483 Routed

2. Enter your PPP User Name and Password. (PPPoA and PPPoE ONLY)
 - PPP User Name:
 - PPP Password:
 - My ISP does not require a username and password

3. Select the IP Type.
 - IP:
 - Subnet Mask:

5. Under IP Type, type the static **IP**, **Subnet Mask**, and **Default Gateway Address** supplied by your Internet Service Provider (ISP).

Note: If your ISP requires static DNS addresses, select the **Static DNS Addresses** radio button under the “Optional” section. Then, type in the **Primary** and **Secondary DNS** addresses.

Then, select **Apply** to save your settings.

The screenshot shows a web browser window titled "Actiontec - Microsoft Internet Explorer provided by Compaq". The address bar shows a URL starting with "http://192.168.0.1/cgi-bin/webcm?getpage=../html/quick_setup_4.html&var:connam". The main content area displays a configuration page with the following elements:

- Section "3. Select the IP type.":
 - IP: [64.246.123.xxx]
 - Subnet Mask: [255.255.255.xxx]
 - Default Gateway Address: [64.246.123.xxx]
 - Radio buttons for:
 - Dynamic IP-DHCP(Default)
 - Single Static IP Address
 - Block of Static IP Addresses (Unnumbered Mode)
 - Single Static IP: [Not Applicable]
 - Gateway Address(Unnumbered Mode): [Not Applicable]
 - Subnet Mask(Unnumbered Mode): [Not Applicable]
- Section "Optional":
 - Text: "Select the DNS type."
 - Radio buttons for:
 - Dynamic DNS Addresses(Default) (selected)
 - Static DNS Addresses
 - Primary DNS: [Not Applicable]
 - Secondary DNS: [Not Applicable]
- Section "4. Now click **Apply** below to save your changes.":
 - An "Apply" button is highlighted with a red rectangle.

6. A “Thank You” page appears briefly.

After configuration is complete, you’re automatically redirected to the “Quick Setup” page.

You now have access to all routing features of the Qwest Standard Modem: Actiontec GT701.

