

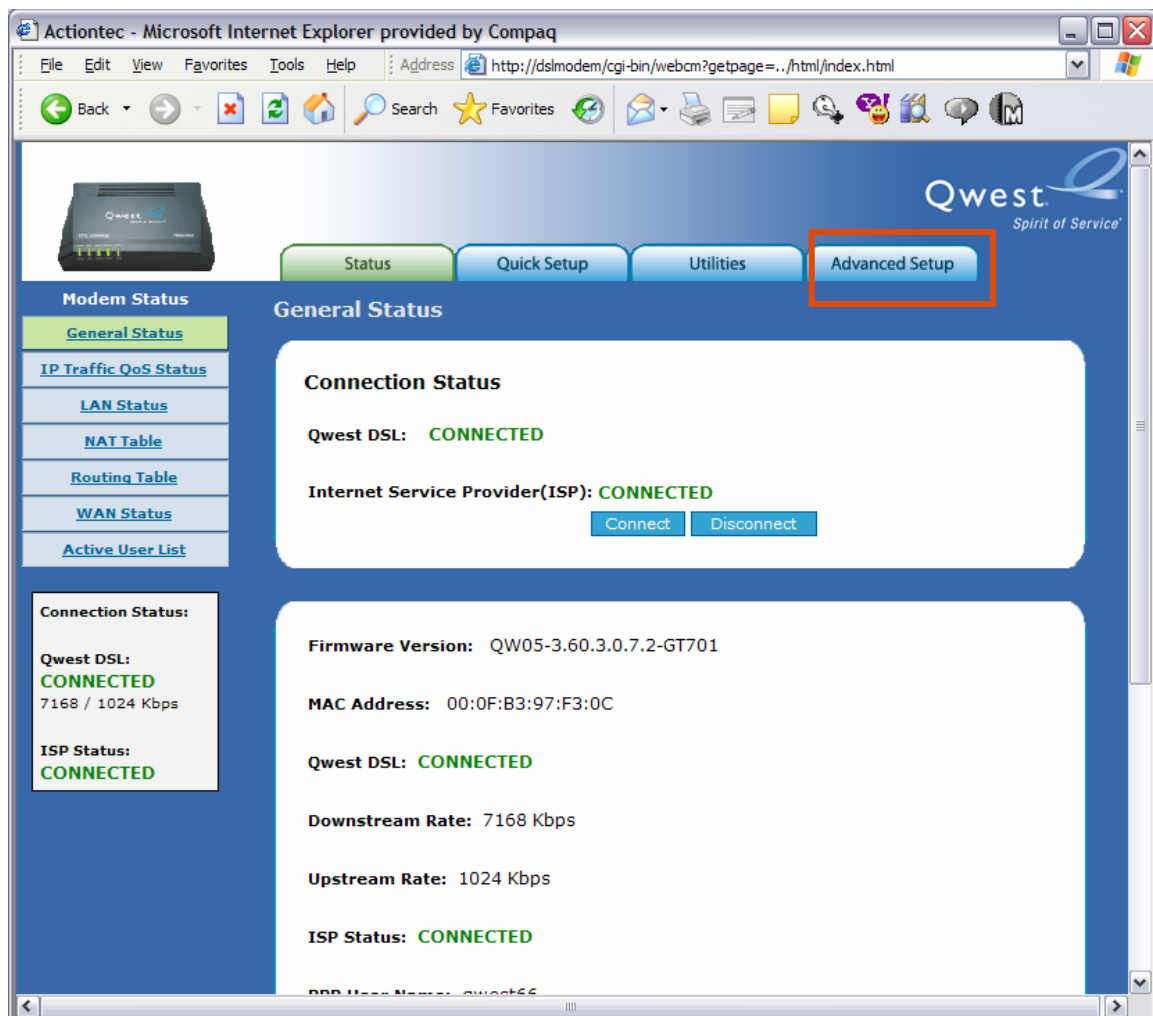
## Qwest® Standard Modem: Actiontec® GT701

### How to Enable Remote Management

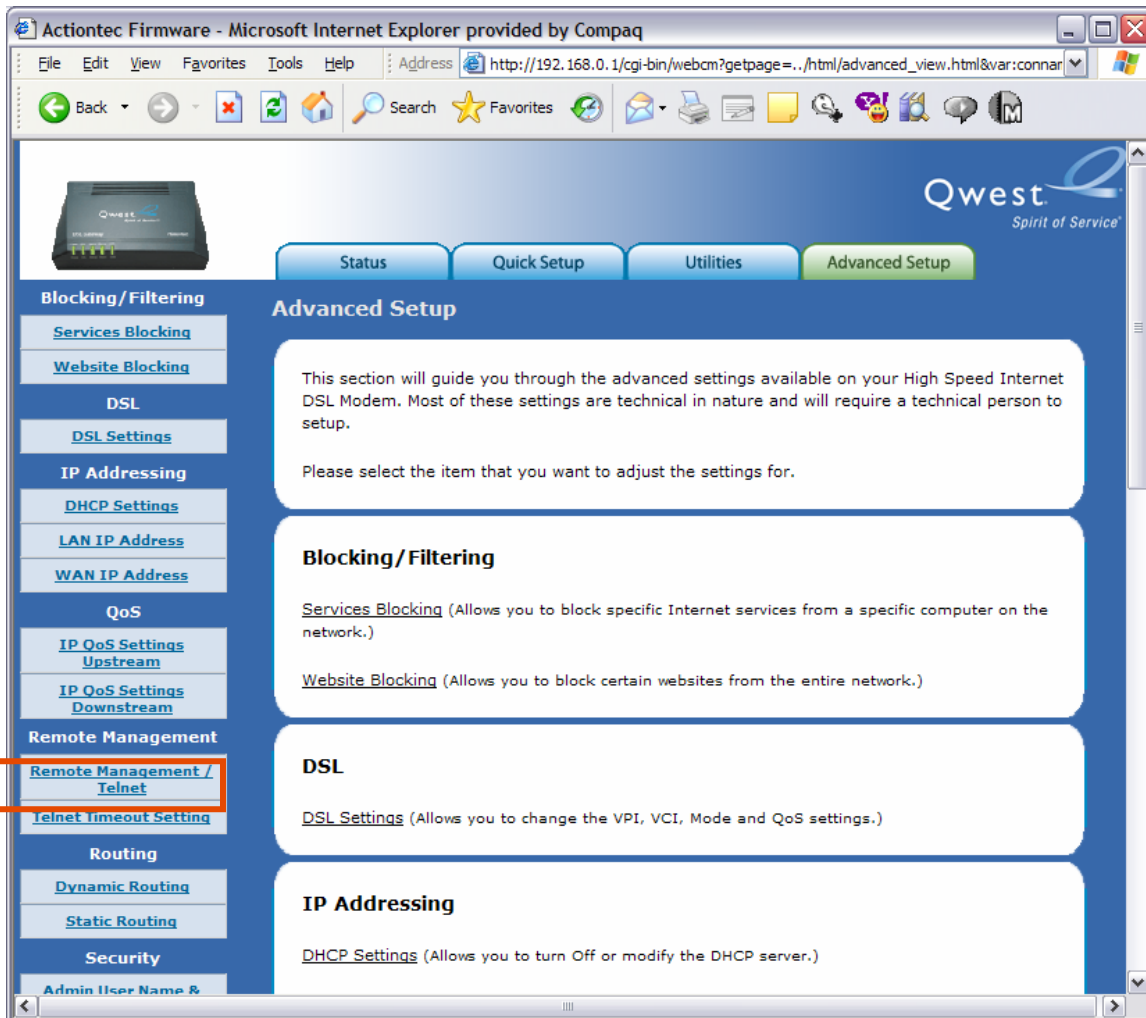
To enable remote access to your Qwest® Standard Modem: Actiontec® GT701, you must:

- Enable the “Remote Management” feature.
- Identify the IP address of your Qwest Standard Modem: Actiontec GT701 located on the “General Status” page.
- Assign and secure an administrative (“admin”) password. The admin password is required to access the GUI (General User Interface) from the LAN and WAN.

1. Enter “192.168.0.1” in the Address bar of your Internet browser, which automatically opens the “General Status” page. Select the **Advanced Setup** tab.



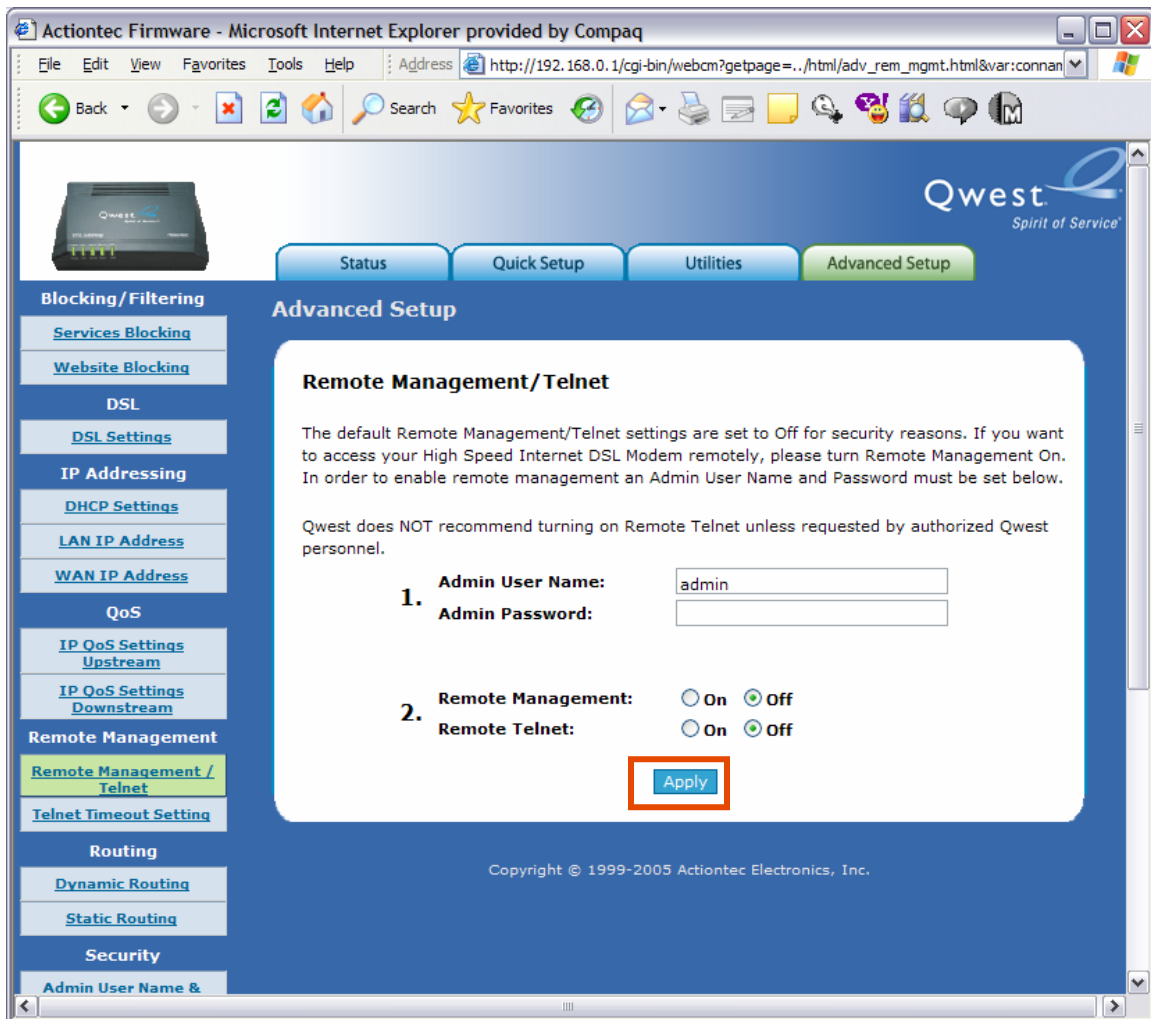
2. Scroll down and select the **Remote Management / Telnet** link.



3. Type the **Admin User Name** and **Admin Password**. Keep the Admin User Name and Admin Password in a secure location.

Select the **On** radio button for the “Remote Management” setting.

Then, select **Apply** to save your settings.



4. A “Thank You” page appears briefly. After configuration is complete, you’re automatically redirected to the “Remote Management” page.

